



Map Key

- Visitor Information Centre
- Parking
- Public Toilets
- Train Station
- Historic Site
- National Trust
- Museum
- Castle
- Abbey
- Dartmoor National Park Visitor Centre
- Templer Way
- Two Moors Way
- National Cycle Network
- Railway
- Heritage Railway
- Military Ranges

Military live firing on Dartmoor

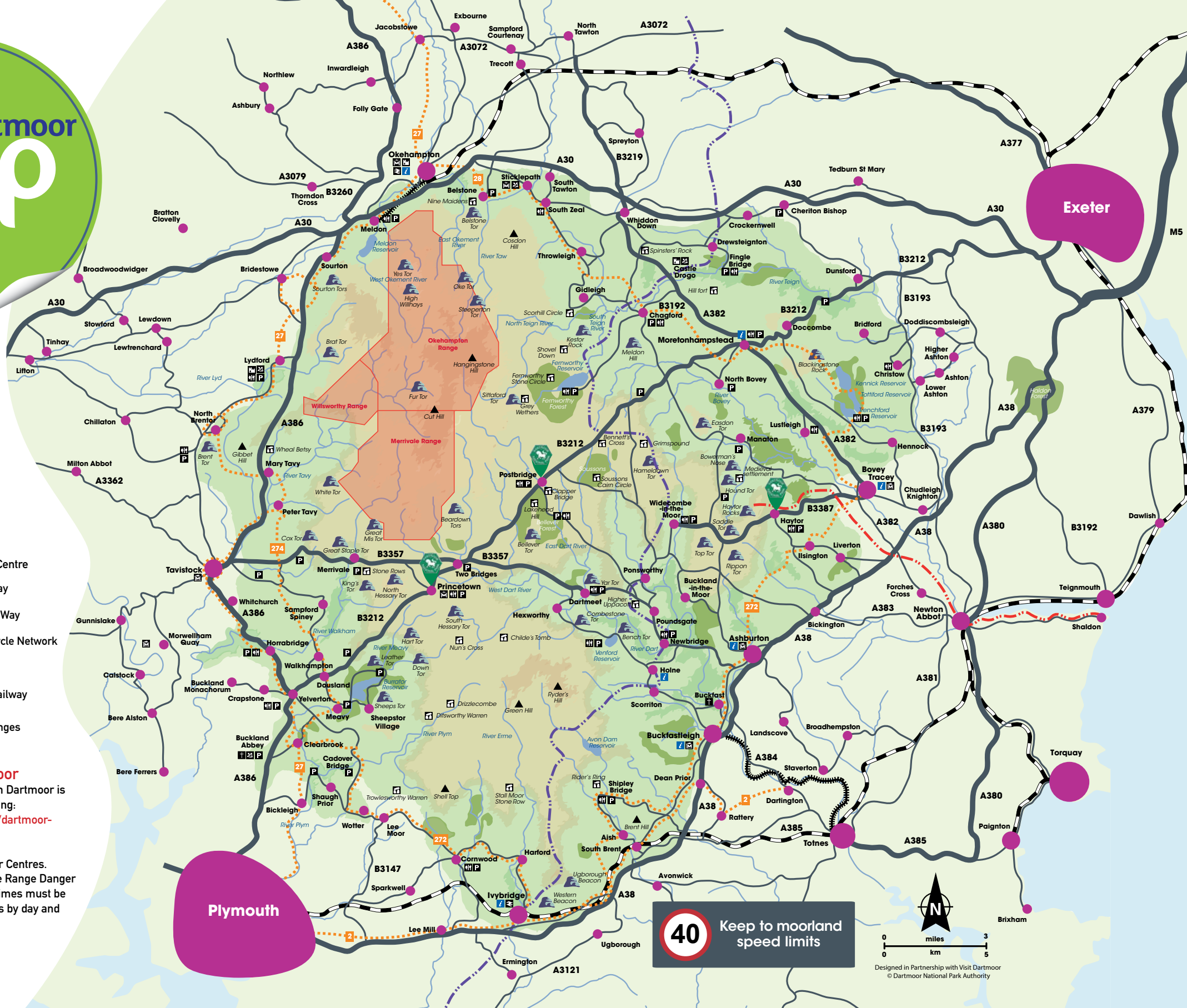
Information about military live firing on Dartmoor is available from several sources, including:

www.gov.uk/government/publications/dartmoor-guaranteed-public-access

Tel: 0800 4584868

or from Dartmoor National Park Visitor Centres. The public has access except when the Range Danger Areas are in use for live firing. Firing times must be checked and warning signals (red flags by day and red lamps by night) heeded.

Dartmoor National Park map © Crown copyright and database rights 2020 Ordnance Survey 100024842



40 Keep to moorland speed limits

0 3 miles
0 5 km

Designed in Partnership with Visit Dartmoor
© Dartmoor National Park Authority